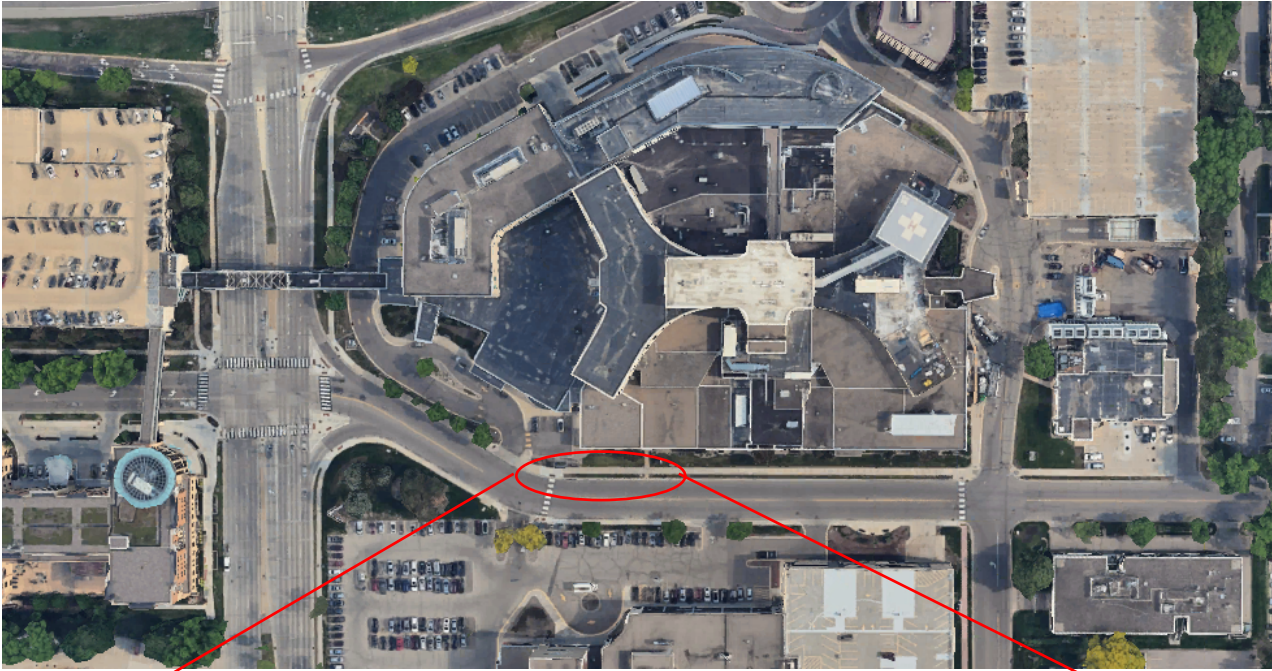
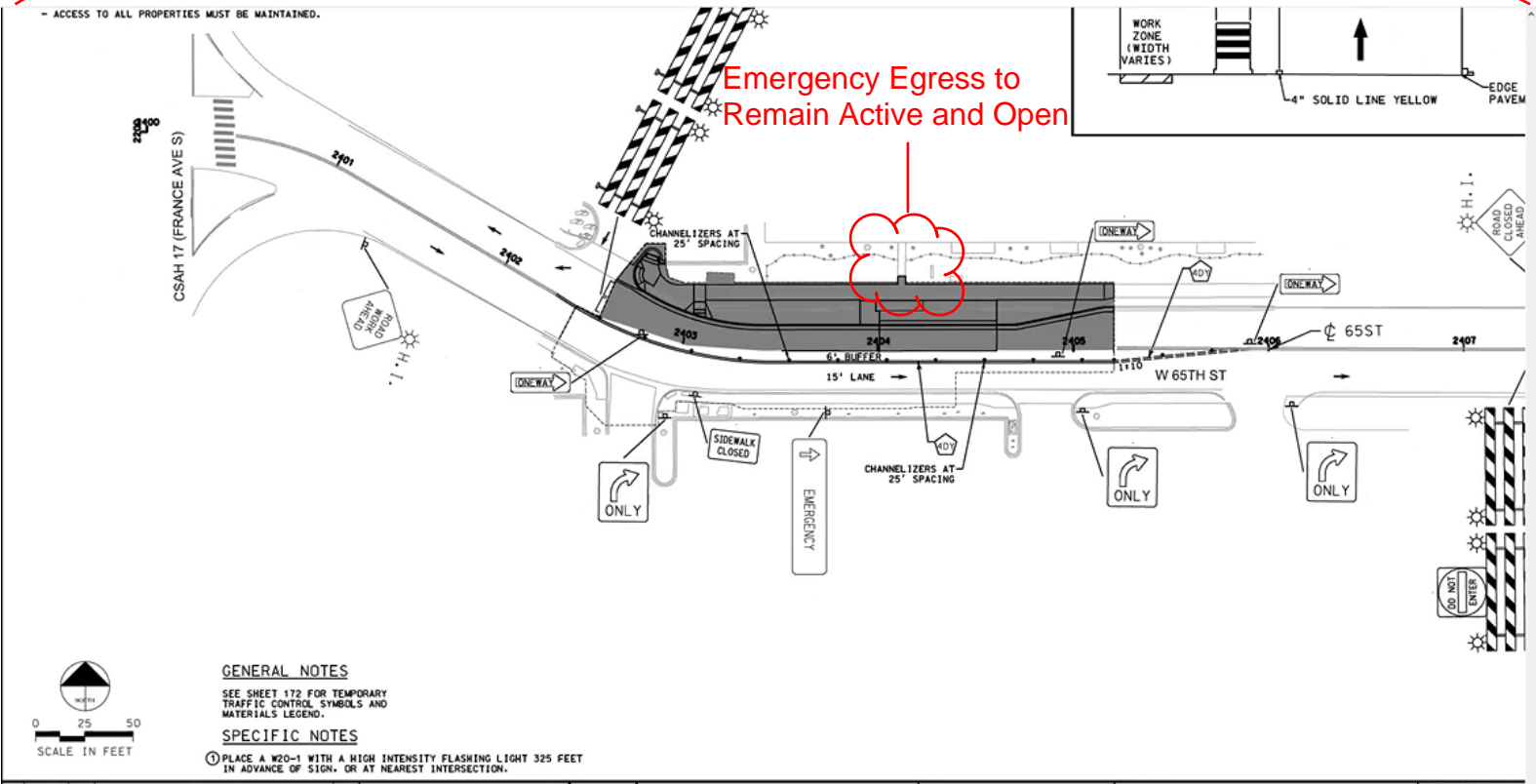


3/10/2025 for 5 weeks  
until 4/14/2025



West bound lane closed East bound traffic will continue



4/29/2025 for 5 weeks  
Until 6/3/2525



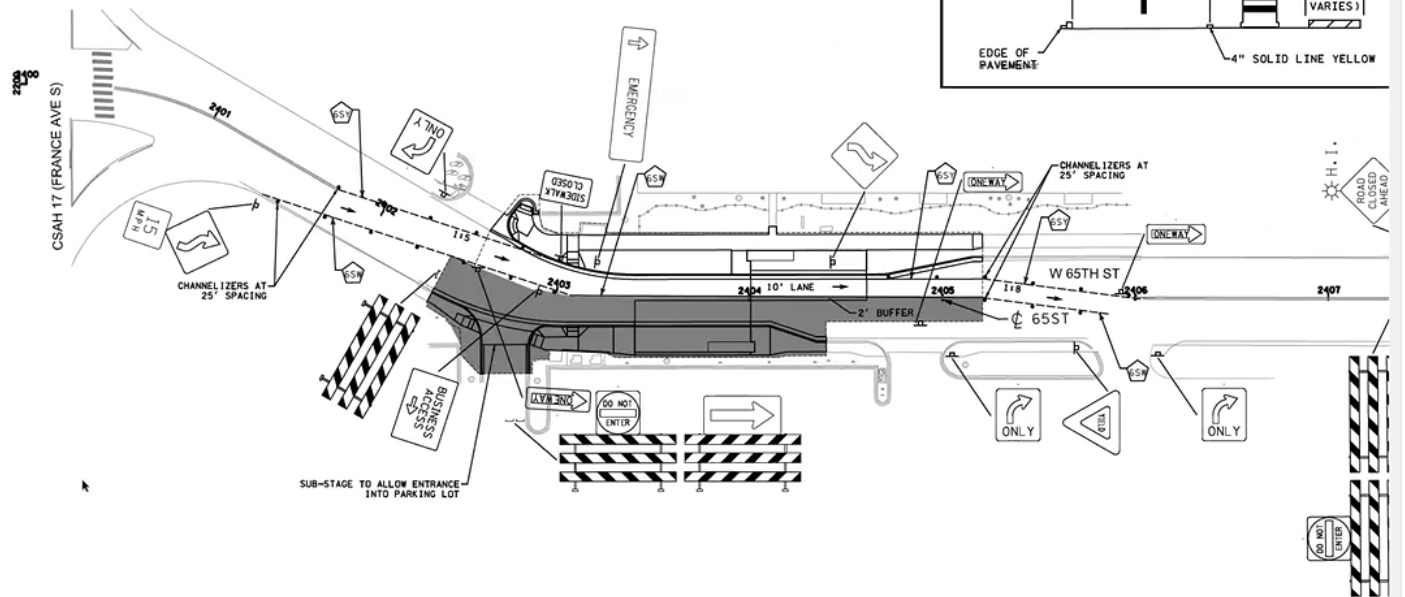
East bound lane closed traffic will continue to flow in East bound direction

**NOTES - STAGE 1**

**CONSTRUCTION ACTIVITIES**  
- CONSTRUCT SOUTHERN STATION AND ASSOCIATED INFRASTRUCTURE.  
- SUB-STAGE WEST HOSPITAL DRIVEWAY CONSTRUCTION TO ALLOW ENTRANCE INTO PARKING LOT.

**TRAFFIC FLOW**  
- CONVERT 65TH ST TO EASTBOUND ONE WAY.

**PEDESTRIANS**  
- ACCESS TO ALL PROPERTIES MUST BE MAINTAINED.



**GENERAL NOTES**

SEE SHEET 172 FOR TEMPORARY TRAFFIC CONTROL SYMBOLS AND MATERIALS LEGEND.

**SPECIFIC NOTES**

1) PLACE A W20-3 WITH A HIGH INTENSITY FLASHING LIGHT 325 FEET